

Solar Air Conditioner

Application:

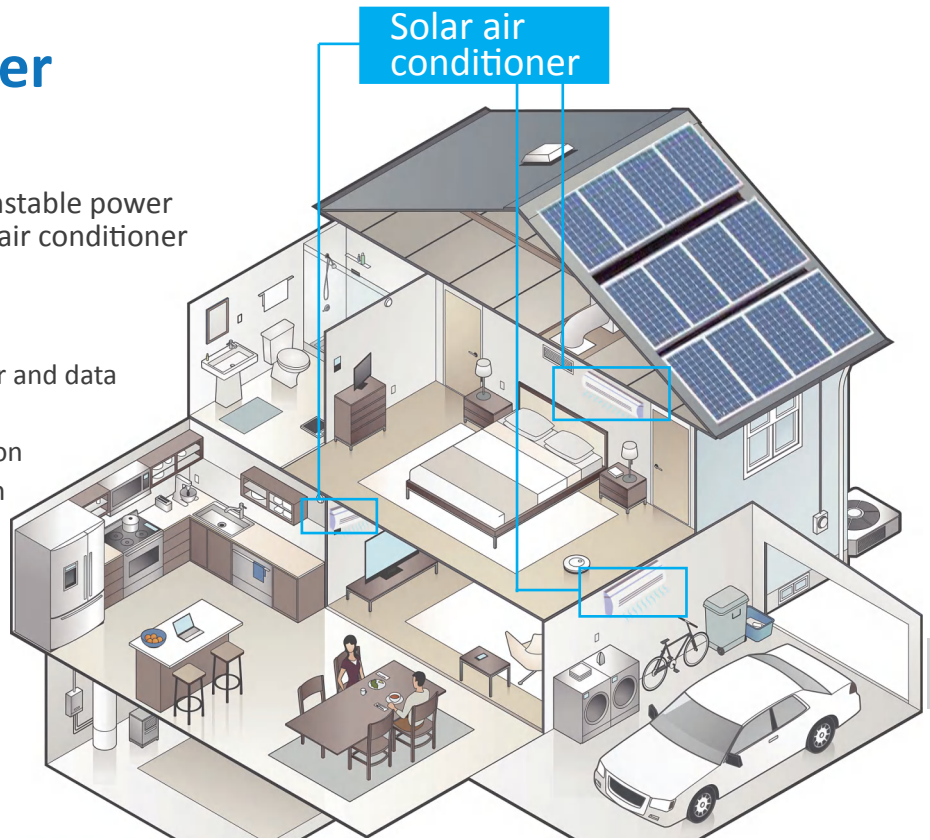
Areas without electricity, low power,unstable power grids,and high electricity prices where air conditioner is in demand.

Core Technology:

- APP smart control,easy to get the meter and data
- T3 Tropical 58 degree working
- MC4 connector for solar easy installation
- Compressor All-in-one packaging design
- Brushless DC motor drive technology



APP Intelligent control



Solar & AC hybrid type



DC solar energy type



100% COOPER



SOLAR PANEL CAPABLE



WIFI CAPABLE



HOT&COOL OPERATION

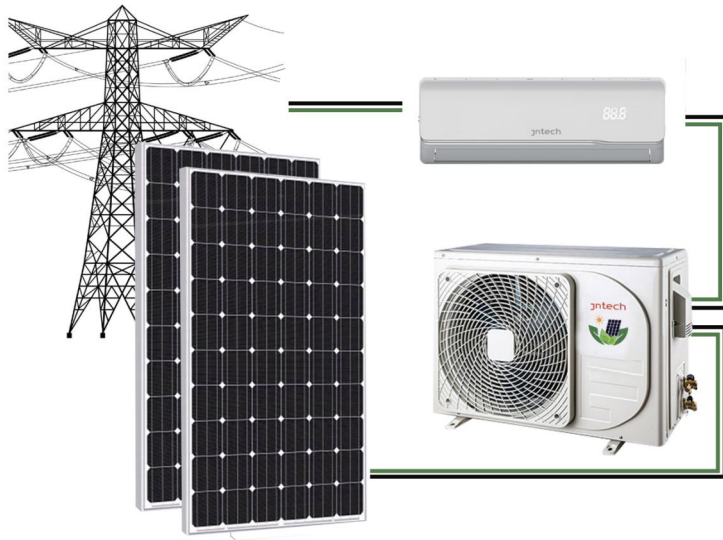


SAFE



BUILT-IN SOLAR CONTROLLER

Solar & AC hybrid type



24 hours available
Priority use of solar energy

Solar& AC hybrid Conditioner system suggested configuration

| Model | Power input (w) average | Work Time (h) solar time | Solar Panel | Application area (m ²) |
|-------------------|-------------------------|--------------------------|-------------|------------------------------------|
| JNSAC-HS-12000BTU | 800 | 9 | 340W*4 | 15~20 |
| JNSAC-HS-18000BTU | 1300 | 8 | 340W*6 | 20~30 |
| JNSAC-HS-24000BTU | 1700 | 8 | 340W*8 | 32~42 |

Note: If there are special requirements for the working time of air conditioner, the system configuration needs to be recalculated.



Solar panel
Solar panel mounting



Solar air conditioner



Breaker with
water proof box



Accessories

12000BTU 18000BTU 24000BTU

T1/T3 Hybrid ACDC Solar Air Conditioner

| Model | Unit | | JNSAC12000-V2 | JNSAC18000-V2 | JNSAC24000-V2 |
|--|------------------------------|----------------|-----------------------|-----------------------|-----------------------|
| Power Supply | AC Power | Ph-V-Hz | 1Ph 208V-240V/50-60HZ | 1Ph 208V-240V/50-60HZ | 1Ph 208V-240V/50-60HZ |
| | DC Power (PV in Series) | V | 80-380V | 80-380V | 80-380V |
| | DC Power Current | A | </=12A | </=12A | </=12A |
| Advised Solar Panel | | Pcs | (3-4)*330W in series | (3-6)*330W in series | (3-8)*330W in series |
| Rated Cooling | Capacity | W | 3510(900-3900) | 5070(1200-6000) | 6450(1800-7900) |
| | | BTU | 12000(3000-13300) | 17300(4100-20400) | 22000(6100-27000) |
| | Power input | W | 940(190-1270) | 1400(220-2100) | 1790(300-3200) |
| Rated Heating | Capacity | W | 4100(1000-4500) | 6100(1200-6800) | 7800(1800-9100) |
| | Power input | W | 1170(190-1700) | 1770(220-2500) | 2290(300-3500) |
| T1 EER (W/W)/(BTU/W) | | / | 3.75/12.75 | 3.60/12.35 | 3.60/12.30 |
| COP (W/W)/(BTU/W) | | / | 3.50/11.95 | 3.45/11.75 | 3.40/11.60 |
| Dehumidification capacity | | L/h | 1.3 | 1.7 | 2.5 |
| Indoor noise level (Turbo) | | dB(A) | 42.5 | 46 | 50 |
| Indoor unit | Dimension(W×H×D) | mm | 840×205×295 | 1080×330×237 | 1080×330×237 |
| | Packing (W×H×D) | mm | 920×290×360 | 1140×300×382 | 1140×300×382 |
| | Net weight/Gross weight | Kg | 9.0/12.5 | 15.0/18.5 | 15.0/18.5 |
| Outdoor noise level | | dB(A) | 52 | 55 | 58 |
| Outdoor unit | Dimension(W×H×D) | mm | 802×564×323 | 802×564×323 | 900×700×337 |
| | Packing (W×H×D) | mm | 910×622×405 | 910×622×405 | 1006×755×418 |
| | Net/Gross weight | Kg | 33.5/37.5 | 37/42.0 | 50/54.5 |
| Refrigerant type | | / | R410A | R410A | R410A |
| Max Design pressure | | MPa | 4.3/1.5 | 4.3/1.5 | 4.3/1.5 |
| Refrigerant copper pipe | Gas side/Liquid side (inch) | inch | 3/8 1/4 | 1/2 1/4 | 1/2 1/4 |
| | Max. refrigerant pipe length | m | 15 | 20 | 25 |
| | Max. difference in level | m | 8 | 10 | 10 |
| Refrigerant connction copper pipe length | | m | 3 | 4 | 4 |
| Connection wire length | | m | 4 | 5 | 5 |
| Electronic Expansion Valve | | / | Yes | Yes | Yes |
| Loading QTY 40" Hq/ 20"GP | | Sets | 200/85 | 160/75 | 115/50 |
| Application area | | m ² | 15~20 | 20~30 | 32~42 |

DC solar energy type

100% solar energy



DC Solar Air Conditioner system suggested configuration

| Model | Power input (w) average | Work Time (h) Daytime+nighttime | Solar Panel | Battery Lead acid/lithium | Charger | Application area(m ²) |
|-------------------|-------------------------|---------------------------------|-------------|-----------------------------|-----------|-----------------------------------|
| JNSAC-DS-9000BTU | 500 | 8+6/8 | 340W*4 | 12V 100ah*4/ 48V 100ah*1 | 48V 60A | 8~15 |
| JNSAC-DS-12000BTU | 800 | 8+6/6 | 340W*6 | 12V 150ah*4/ 48V 100ah*1 | 48V 60A | 15~20 |
| JNSAC-DS-18000BTU | 1300 | 8+8/7 | 340W*12 | 12V 200ah*8/ 48V 100ah*2 | 48V 60A | 20~30 |
| JNSAC-DS-24000BTU | 1700 | 8+8/8 | 340W*18 | 12V 250ah*8/ 48V 100ah*3 | 48V 60A*2 | 32~42 |

Note: Lithium battery systems last three times as long as lead acid.
If there are special requirements for the working time of air conditioner, the system configuration needs to be recalculated.



Solar panel
Solar panel mounting



Solar air conditioner



Breaker with
water proof box



Accessories



MPPT Solar charger



Gel Battery

DC Solar Air Conditioner

| Model | | | JNSAC9000-V1 | JNSAC12000-V1 | JNSAC18000-V1 | JNSAC24000-V1 |
|---|------------------|----------------|------------------|-------------------|-------------------|-------------------|
| Climate Type | Tropical<= 58 | | T1/T3 | T1/T3 | T1/T3 | T1/T3 |
| Power supply | Battery | DC | DC48V(46~58V) | DC48V(46~58V) | DC48V(46~58V) | DC48V(46~58V) |
| Rated Cooling | Capacity(T1) | W | 2600(1000-3400) | 3510(1000-3700) | 5070(1200-5250) | 6450(2500-7000) |
| | | BTU | 9000(3400-11600) | 12000(3400-12600) | 17300(4100-18000) | 22000(8500-23900) |
| | Power input(T1) | W | 680(180-1060) | 980(200-1200) | 1450(220-1780) | 1840(450-2230) |
| Rated Heating | Capacity | W | 2900(800-3050) | 3900(1000-4100) | 5250(1200-5500) | 7000(2000-7350) |
| | Power input | W | 830(160-950) | 1130(180-1280) | 1400(220-1830) | 2050(390-2350) |
| T1 EER (W/W)/(BTU/W) | | / | 3.90/13.20 | 3.60/12.25 | 3.50/11.8 | 3.50/11.85 |
| COP (W/W)/(BTU/W) | | / | 3.50/11.90 | 3.45/11.75 | 3.75/12.80 | 3.40/11.70 |
| Dehumidification capacity | | L/h | 1.0 | 1.3 | 1.7 | 2.5 |
| Indoor noise level (Turbo) | | dB(A) | 40 | 42.5 | 46 | 50 |
| Indoor unit | Dimension(W×H×D) | mm | 840×205×295 | 840×205×295 | 1080×330×237 | 1080×330×237 |
| | Packing (W×H×D) | mm | 920×290×360 | 920×290×360 | 1140×300×382 | 1140×300×382 |
| | Net/Gross weight | Kg | 9.0/12.5 | 9.0/12.5 | 15.0/18.5 | 15.0/18.5 |
| Outdoor coil | a.Number of rows | / | 1 | 2 | 2 | 2 |
| Outdoor noise level | | dB(A) | 51 | 52 | 55 | 58 |
| Outdoor unit | Dimension(W×H×D) | mm | 802×564×323 | 802×564×323 | 802×564×323 | 900×700×337 |
| | Packing (W×H×D) | mm | 910×622×405 | 910×622×405 | 910×622×405 | 1006×755×418 |
| | Net/Gross weight | Kg | 28.0/32.0 | 32.0/36.0 | 36.0/40.0 | 51/56 |
| Refrigerant type | | / | R410a | R410a | R410a | R410a |
| Max Design pressure (Discharge/Suction) | | MPa | 4.3/1.5 | 4.3/1.5 | 4.3/1.5 | 4.3/1.1 |
| Refrigerant pipinglength | | m | 3 | 3 | 4 | 4 |
| Application area | | m ² | 8~15 | 15~20 | 20~30 | 32~42 |